

OSTRA



SIZES XS-XXL

The reinforced Softshell jacket, water-resistant and breathable for bad weather:

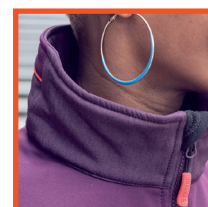
- 8000 Schmerber water-resistance and 1000 MVTR breathability
- Fleece lined
- 100% Nylon reinforcements



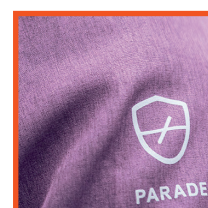
1783 PURPLE



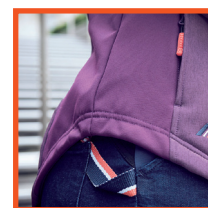
1753 PARADE GREY



HIGH COLLAR



CLOSE-UP ON FABRIC



LONG BACK

THE + TECHNICAL PROPERTIES



WATER-REPELLENT



BREATHABLE



HEAT INSULATING



HEIGHTENED COLLAR



LENGTHENED BACK

COMPOSITION:

Fabric: 94% Polyester, 6% Elastane

Weight: 300 g/m²

Reinforcement: 100% Nylon

Lining: 100% Polyester

WASHING INSTRUCTIONS



TECHNICAL SPECIFICATIONS

- Softshell reversible jacket, contrasting black fleece lining.
- Subtly contrasting reinforcements: shoulders, sides, pockets, cuffs and back collar.
- Parade collar protects the back of the neck from the cold.
- YKK zip in the middle of the front
- Vertical breast pocket and low zip pockets. All the pockets are lined with warm micro-fleece.
- Elasticated cuffs.
- Bottom adjustable on the sides with an interior elasticated cord.