

# EU-TYPE EXAMINATION CERTIFICATE



The following model of Personal Protective Equipment has been subjected to an EU-type examination in accordance with the module B of the PPE regulation (2016/425) and has been shown to satisfy to essential health and safety requirements.

**Certificate N°** 0075/1422/161/03/19/0848 - EXT 10/03/19

Issued by CTC, Notified Body N°0075, to the following model of personal protective equipment :

**Manufacturer :** PARADE S.A.S.  
BP36 49110 SAINT PIERRE MONTLIMART  
France

## Description

**PPE Type :** *a safety and ESD footwear*

**Product reference :** BALLIA 17 21

**Article code :**

**Construction and material of outsole :** Injected

**Pictures :**



**Reference standard :** EN ISO 20345 : 2011 and EN 61340-4-3 Dissipative classe 3

**Classification :** I **Category :** S3

**Size range :** 35 - 42 **Slip resistance :** SRC

**Toecap nature :** Metallic **Insert nature :** Non Metallic

At the date of certificate the product is in compliance with Annex XVII of REACH regulation (n° 1907/2006 and revisions)

Full description of the PPE, reference rules verified in the context of the EU-type examination and information given on the product are detailed in the manufacturer's technical file index D1 dated from March 2019

NOTA : Any modification to new items of the personal protective equipment object of this EU type approval certificate or any modification of the information contained in the manufacturer technical file which served for the deliverance of the EU type approval certificate (change of address, change of company status) should be brought to the attention of the notified body in accordance with Annex V §7.2 of Regulation 2016/425.

**Issued in Lyon by**

Lionel GAUDILLERE

PPE Certification Manager

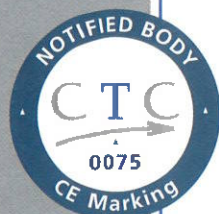
**Date of first issue :** 18 March 2019

**End of validity date :** 18 March 2024



[www.ctcgroupe.com](http://www.ctcgroupe.com)

[cemarking@ctcgroupe.com](mailto:cemarking@ctcgroupe.com)



In application of the Regulation 2016/425 of the European parliament and the Council of 9th March 2016 related to Personal Protective Equipment and repealing the Directive 89/686/EEC.

CTC - 4, rue Hermann Frenkel - 69367 Lyon cedex 07 - France  
Tél. : +33 (0)4 72 76 10 10 - Fax : +33 (0)4 72 76 10 00 - [ctclyon@ctcgroupe.com](mailto:ctclyon@ctcgroupe.com)

Comité Professionnel de Développement Économique (CPDE) Cuir Chaussure Maroquinerie Ganterie  
Loi 78-654 du 22.06.1978 - Siret 77564972600160 - Code NAF 9412Z - TVA FR 88775649726

# EU-TYPE EXAMINATION CERTIFICATE



The following model of Personal Protective Equipment has been subjected to an EU-type examination in accordance with the module B of the PPE regulation (2016/425) and has been shown to satisfy to essential health and safety requirements.

**Certificate N°** 0075/1422/161/03/19/0848 - EXT 13/03/19

Issued by CTC, Notified Body N°0075, to the following model of personal protective equipment :

**Manufacturer :** PARADE S.A.S.  
BP36 49110 SAINT PIERRE MONTLIMART  
France

## Description

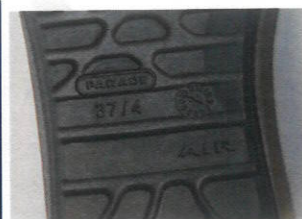
**PPE Type :** *a safety and ESD footwear*

**Product reference :** BALLIA 97 94

**Article code :**

**Construction and material of outsole :** Injected

**Pictures :**



**Reference standard :** EN ISO 20345 : 2011 and EN 61340-4-3 Dissipative classe 3

**Classification : I** **Category : S3**

**Size range : 35 - 42** **Slip resistance : SRC**

**Toecap nature : Metallic** **Insert nature : Non Metallic**

At the date of certificate the product is in compliance with Annex XVII of REACH regulation (n° 1907/2006 and revisions)

Full description of the PPE, reference rules verified in the context of the EU-type examination and information given on the product are detailed in the manufacturer's technical file index 01 dated from March 2019

NOTA : Any modification to new items of the personal protective equipment object of this EU type approval certificate or any modification of the information contained in the manufacturer technical file which served for the deliverance of the EU type approval certificate (change of address, change of company status) should be brought to the attention of the notified body in accordance with Annex V §7.2 of Regulation 2016/425.

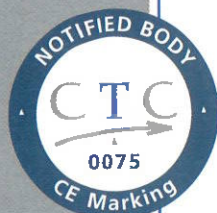
**Issued in Lyon by**

Lionel GAUDILLERE

PPE Certification Manager

**Date of first issue : 19 March 2019**

**End of validity date : 19 March 2024**



In application of the Regulation 2016/425 of the European parliament and the Council of 9th March 2016 related to Personal Protective Equipment and repealing the Directive 89/686/EEC.

[www.ctcgroupe.com](http://www.ctcgroupe.com)

[cemarking@ctcgroupe.com](mailto:cemarking@ctcgroupe.com)

CTC - 4, rue Hermann Frenkel - 69367 Lyon cedex 07 - France  
Tél. : +33 (0)4 72 76 10 10 - Fax : +33 (0)4 72 76 10 00 - [ctclyon@ctcgroupe.com](mailto:ctclyon@ctcgroupe.com)

Comité Professionnel de Développement Économique (CPDE) Cuir Chaussure Maroquinerie Ganterie  
Loi 78-654 du 22.06.1978 - Siret 77564972600160 - Code NAF 9412Z - TVA FR 88775649726



# EU-TYPE EXAMINATION CERTIFICATE



The following model of Personal Protective Equipment has been subjected to an EU-type examination in accordance with the module B of the PPE regulation (2016/425) and has been shown to satisfy to essential health and safety requirements.

**Certificate N°** 0075/1422/161/03/19/0848 - EXT 14/03/19

Issued by CTC, Notified Body N°0075, to the following model of personal protective equipment :

**Manufacturer :** PARADE S.A.S.  
BP36 49110 SAINT PIERRE MONTLIMART  
France

## Description

**PPE Type :** *a safety and ESD footwear*

**Product reference :** BALLIA 97 97

**Article code :**

**Construction and material of outsole :** Injected

**Pictures :**



**Reference standard :** EN ISO 20345 : 2011 and EN 61340-4-3 Dissipative classe 3

**Classification : I** **Category : S3**

**Size range : 35 - 42** **Slip resistance : SRC**

**Toecap nature : Metallic** **Insert nature : Non Metallic**

At the date of certificate the product is in compliance with Annex XVII of REACH regulation (n° 1907/2006 and revisions)

Full description of the PPE, reference rules verified in the context of the EU-type examination and information given on the product are detailed in the manufacturer's technical file index 01 dated from March 2019

NOTA : Any modification to new items of the personal protective equipment object of this EU type approval certificate or any modification of the information contained in the manufacturer technical file which served for the deliverance of the EU type approval certificate (change of address, change of company status) should be brought to the attention of the notified body in accordance with Annex V §7.2 of Regulation 2016/425.

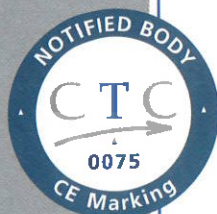
**Issued in Lyon by**

Lionel GAUDILLERE

PPE Certification Manager

**Date of first issue : 19 March 2019**

**End of validity date : 19 March 2024**



In application of the Regulation 2016/425 of the European parliament and the Council of 9th March 2016 related to Personal Protective Equipment and repealing the Directive 89/686/EEC.

[www.ctcgroupe.com](http://www.ctcgroupe.com)

[cemarking@ctcgroupe.com](mailto:cemarking@ctcgroupe.com)

CTC - 4, rue Hermann Frenkel - 69367 Lyon cedex 07 - France  
Tél. : +33 (0)4 72 76 10 10 - Fax : +33 (0)4 72 76 10 00 - [ctclyon@ctcgroupe.com](mailto:ctclyon@ctcgroupe.com)

Comité Professionnel de Développement Économique (CPDE) Cuir Chaussure Maroquinerie Ganterie  
Loi 78-654 du 22.06.1978 - Siret 77564972600160 - Code NAF 9412Z - TVA FR 88775649726