

EU-TYPE EXAMINATION CERTIFICATE



The following model of Personal Protective Equipment has been subjected to an EU-type examination in accordance with the module B of the PPE regulation (2016/425) and has been shown to satisfy to essential health and safety requirements.

Certificate N° 0075/1422/161/05/18/0920 EXT 20/06/21

Issued by CTC, Notified Body N°0075, to the following model of personal protective equipment :

Manufacturer : PARADE S.A.S.
BP36 49111 SAINT PIERRE MONTLIMART
France

Description

PPE Type : a safety footwear
Product reference : NIKOLA 38 33
Article code : /
Construction and material of outsole : Injected PU midsole / PU outsole

Pictures :



Reference standard : EN ISO 20345 : 2011

Classification : I

Category : S3 HI CI

Size range : 36 - 48

Slip resistance : SRC

Toecap nature : Non Metallic

Insert nature : Non Metallic

At the date of certificate the product is in compliance with Annex XVII of REACH regulation (n° 1907/2006 and revisions)

Full description of the PPE, reference rules verified in the context of the EU-type examination and information given on the product are detailed in the manufacturer's technical file index 01 dated from JUNE, 2021

NOTA : Any modification to new items of the personal protective equipment object of this EU type approval certificate or any modification of the information contained in the manufacturer technical file which served for the deliverance of the EU type approval certificate (change of address, change of company status) should be brought to the attention of the notified body in accordance with Annex V §7.2 of Regulation 2016/425. Any marking on the PPE which is not concerned by the Regulation (UE) 2016/425, is not covered by this certificate.

Issued in Lyon by

Didier GUISADO

Certification and Quality Manager

Date of first issue : 04 June 2021

End of validity date : 04 June 2026



In application of the Regulation 2016/425 of the European parliament and the Council of 9th March 2016 related to Personal Protective Equipment and repealing the Directive 89/686/EEC.



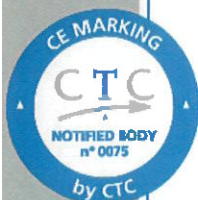
Accreditation n° 5-0594
Scope available on
www.cofrac.fr

www.ctcgroupe.com

cemarking@ctcgroupe.com

CTC - 4, rue Hermann Frenkel - 69367 Lyon cedex 07 - France
Tél. : +33 (0)4 72 76 10 10 - Fax : +33 (0)4 72 76 10 00 - ctclyon@ctcgroupe.com

Comité Professionnel de Développement Économique (CPDE) Cuir Chaussure Maroquinerie Ganterie
Loi 78-654 du 22.06.1978 - Siret 77564972600160 - Code NAF 9412Z - TVA FR 88775649726



EU-TYPE EXAMINATION CERTIFICATE



The following model of Personal Protective Equipment has been subjected to an EU-type examination in accordance with the module B of the PPE regulation (2016/425) and has been shown to satisfy to essential health and safety requirements.

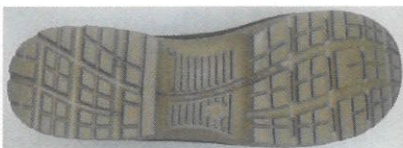
Certificate N° 0075/1422/161/05/18/0920 EXT 23/08/21

Issued by CTC, Notified Body N°0075, to the following model of personal protective equipment :

Manufacturer : **PARADE S.A.S.**
BP36 49111 SAINT PIERRE MONTLIMART
France

Description

PPE Type : *a safety footwear*
Product reference : **NIKOLA 48 54**
Construction and material of outsole : **Injected PU midsole / PU outsole**
Pictures :



Reference standard : **EN ISO 20345 : 2011**

Classification : **I**

Category : **S3 HI CI**

Size range : **36 - 48**

Slip resistance : **SRC**

Toecap nature : **Non Metallic**

Insert nature : **Non Metallic**

At the date of certificate the product is in compliance with Annex XVII of REACH regulation (n° 1907/2006 and revisions)

Full description of the PPE, reference rules verified in the context of the EU-type examination and information given on the product are detailed in the manufacturer's technical file index 01 dated from August 2021

NOTA : Any modification to new items of the personal protective equipment object of this EU type approval certificate or any modification of the information contained in the manufacturer technical file which served for the deliverance of the EU type approval certificate (change of address, change of company status) should be brought to the attention of the notified body in accordance with Annex V §7.2 of Regulation 2016/425. Any marking on the PPE which is not concerned by the Regulation (UE) 2016/425, is not covered by this certificate.

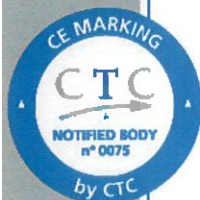
Issued in Lyon by

Date of first issue : 25 August 2021

Nadine PIPAZ

End of validity date : 25 August 2026

CE Expert Team Coordinator



In application of the Regulation 2016/425 of the European parliament and the Council of 9th March 2016 related to Personal Protective Equipment and repealing the Directive 89/686/EEC.



Accreditation n° 5-0594
Scope available on:
www.cofrac.fr

www.ctcgroupe.com

cemarking@ctcgroupe.com

CTC - 4, rue Hermann Frenkel - 69367 Lyon cedex 07 - France
Tél. : +33 (0)4 72 76 10 10 - Fax : +33 (0)4 72 76 10 00 - ctclyon@ctcgroupe.com

Comité Professionnel de Développement Économique (CPDE) Cuir Chaussure Maroquinerie Ganterie
Loi 78-654 du 22.06.1978 - Siret 77564972600160 - Code NAF 9412Z - TVA FR 88775649726